

Closed-loop application and artefact correction for tACS-EEG

Sophia Wunder, Eliana García-Cossio, Falk Schlegelmilch

sophia.wunder@neurocaregroup.com

neuroCare Group GmbH | Albert-Einstein-Str. 3
D-98693 Ilmenau | GERMANY

Introduction

Simultaneous transcranial electrical stimulation (tES) and electroencephalography (EEG) paved the way for a better understanding of tES-induced effects, local and network effects and the functional role of brain oscillations. Individual and brain-state dependent brain stimulation gained enormous interest in recent years as it allows researchers to interfere with the participant's ongoing brain activity with high temporal and spectral precision using EEG (Zrenner et al., 2016; Berényi et al., 2012). The application of brain state triggered non-invasive brain stimulation is called closed-loop stimulation, which has been shown recently for TMS (Zrenner et al., 2016; Bergmann et al., 2016) and for tES (Brittain et al., 2013). As the distortions of tES are several orders of magnitude higher than the physiological EEG and are therefore impeding EEG analyses, methods for artefact correction are necessary, which still remain a challenging task. Here, we present a system for closed-loop applications of tES-EEG and demonstrate the performance of two online artefact correction methods.

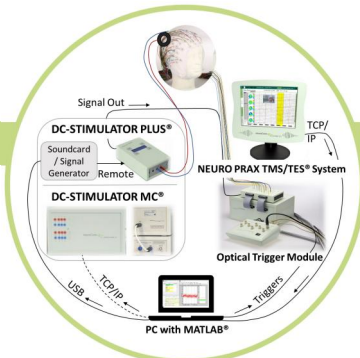


Figure 1: Diagram of the components and connections for the closed-loop application. For stimulation, the single or multi-channel device (DC-STIMULATOR PLUS / MC) can be used.

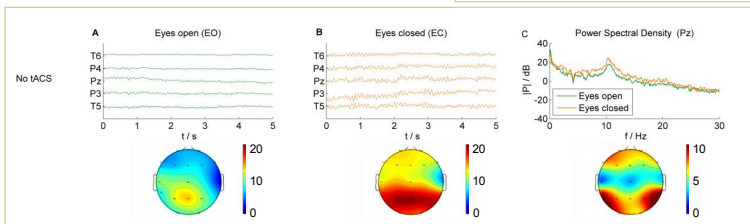


Figure 3: Time course of five EEG channels for conditions EO (left), EC (center) and their power spectral density at channel Pz (right). The topography plots show the activity (in dB) at the volunteer's alpha peak frequency of 11 Hz for EO (left), EC (center) and the difference between both conditions (right).

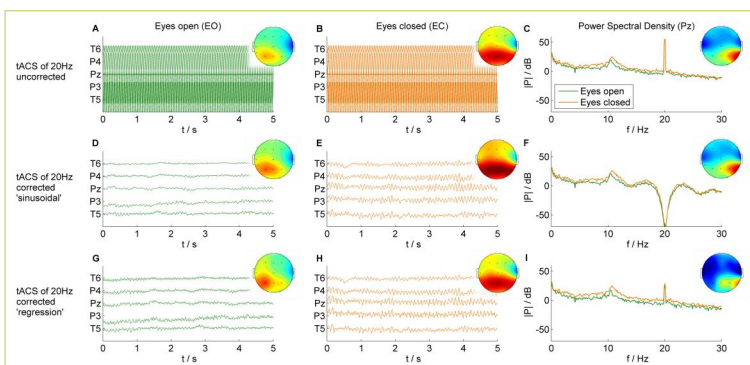


Figure 4: TACS of 20 Hz uncorrected (1st row), 'sinusoidal' (2nd row) and 'regression' (3rd row) presented analogous to Figure 3. 'Sinusoidal' artefact correction shows a clear EEG without residual TACS artefacts, while for 'regression' method there remain slight residual artefacts. The alpha activity is not affected by both correction approaches.

Conclusion

The evaluation of the performance of the two artefact correction approaches for delivered information about the advantages of each method. The 'sinusoidal' artefact correction based on a recursive discrete Fourier transformation at the stimulation frequency delivers overall good signal reconstruction. The elimination might be too strong in some cases though (e.g. 10 Hz), particularly on the neighbouring frequencies, which needs to be further investigated and improved. However, this approach shows robust results for all applied frequencies. Furthermore, the algorithm can be extended to correct for up to 21 harmonics of the stimulation frequency. When stimulating at the frequency range of interest, this approach impedes to analyse the remaining activity. In this case, the 'regression' algorithm is more beneficial, which is based on a dynamic linear regression model and does consequently not cut out the stimulation frequency. In a recent abstract by Kahl et al. (2017), the performance of the NEURO PRAX[®] TMS/TES

Materials & Methods

The closed-loop application is based on a spectral power dependant individual alpha detection which controls a transcranial alternating current stimulation (tACS) during eyes-open and eyes-closed condition. The EEG was recorded using neuroConn's NEURO PRAX[®] TMS/TES system and was sent online to a laptop computer via TCP/IP connection (either raw or corrected data), which performed the alpha detection using a customized script in MATLAB[®] (The Mathworks, Natick, USA). The analogue stimulation signal was sent out by means of the integrated laptop soundcard and was fed into the remote input of the DC-STIMULATOR PLUS. Furthermore, it is possible to send the analogue signal to the stimulator by a digital signal generator via USB, here we used the Rigol DG1062Z (Rigol Technologies Inc., Beijing, P.R. China). For starting neuroConn's tACS artefact correction on the NEURO PRAX[®] TMS/TES system, triggers were controlled by the client PC and converted to optical triggers by using neuroConn's Optical Trigger Module. The tACS signal for artefact correction was recorded with the EEG amplifier as well, using the SIGNAL OUT BOX. In another closed-loop implementation with some minor setup changes, we used the DC-STIMULATOR MC with the POWER SUPPLY EXTENSION and ACTIVE SYNC. This multi-channel stimulator was controlled remotely by the MATLAB[®] client via TCP/IP.

Results

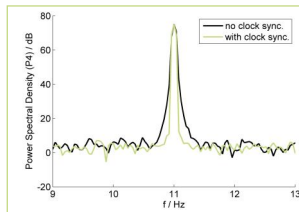


Figure 2: Clock synchronization (ACTIVE SYNC) between the EEG recording system and the stimulator decreases the spectral leakage of the tACS frequency (here 11 Hz) and enables better artefact removal.

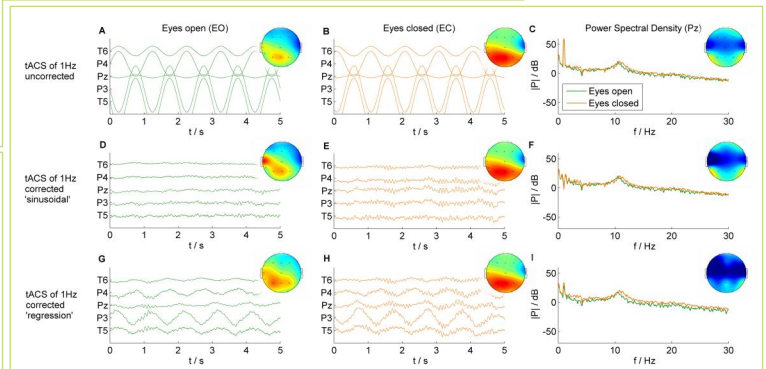


Figure 5: TACS of 1 Hz uncorrected (1st row), 'sinusoidal' (2nd row) and 'regression' (3rd row) presented analogous to Figure 3. The 'sinusoidal' approach shows a very good correction. Influences on neighbouring frequencies, in the spectrum are very low. The 'regression' method shows residual artefacts.

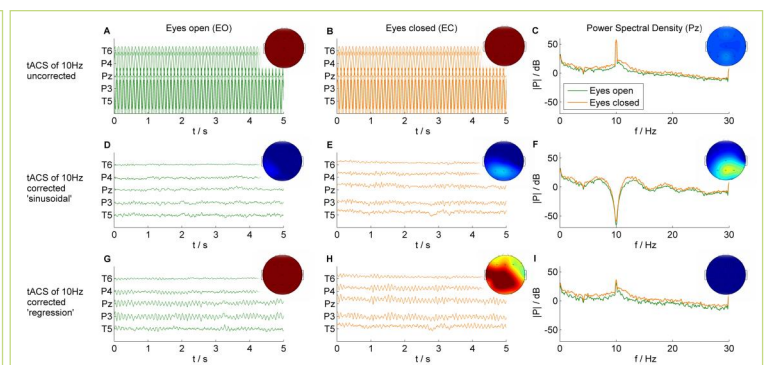


Figure 6: TACS of 10 Hz uncorrected (1st row), 'sinusoidal' (2nd row) and 'regression' (3rd row) presented analogous to Figure 3. Time courses show clear EEG signals. The 'sinusoidal' approach shows very strong artefact elimination that even affects neighbouring frequencies, while the 'regression' method shows residual artefacts of TACS.

References

- Berényi A, Belluscio M, Mao D, Buzsáki G. Closed-loop control of epilepsy by transcranial electrical stimulation. *Science* 2012;337:735-7.
- Bergmann TO, Karabanov A, Hartwigsen G, Thielscher A, Siebner HR. Combining non-invasive transcranial brain stimulation with neuroimaging and electrophysiology: current approaches and future perspectives. *Neuroimage* 2016;14:4-19.
- Brittain JS, Probert-Smith P, Aziz TZ, Brown P. Tremor suppression by rhythmic transcranial current stimulation. *Curr Biol* 2013;23:436-40.
- Kohl S, Krachunov S, Casson AJ. Towards closed-loop transcranial electrical stimulation: a comparison of methods for real time tES-EEG artefact removal using a phantom head model. Abstract from 2nd International Brain Stimulation Conference, Barcelona, Spain, 2017; 467-468.
- Schlegelmilch F, Stein P, Schellhorn K. A method for online correction of artefacts in EEG signals during transcranial electrical stimulation. Poster at the 5th International Conference on Non-Invasive Brain Stimulation, Leipzig, Germany, 2013.
- Zrenner C, Belardinelli P, Müller-Dahlhaus F, Ziemann U. Closed-loop neuroscience and non-invasive brain stimulation: a tale of two loops. *Front Cell Neurosci* 2016;10:92.

This work is supported by the Federal Ministry of Education and Research (Germany) (research project IMONAS – Individualisierte Modulation kortikaler Netzwerke durch Adaptive Stimulation)

